



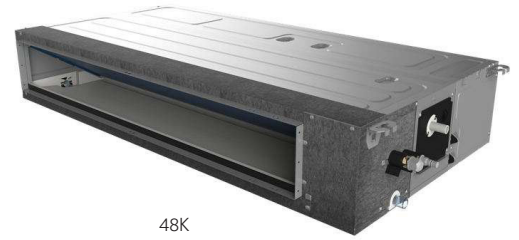
Medium Static Pressure Duct

Indoor Unit

- Auto Random Restart
- Low noise
- Washable air filter
- High velocity air flow
- Easy maintenance
- Drain pump (Optional)
- Wireless controller (Optional)



24K



48K

Wired Controller

- Temp. Range 16°C to 32°C
- 5 operation modes: Auto, Cool, Dry, Heat, Fan only
- Multi-speed fan setting: High/Medium/Low/Auto
- 24-hour timer setting
- Big LCD display
- Parameter setting
- Error display



24K



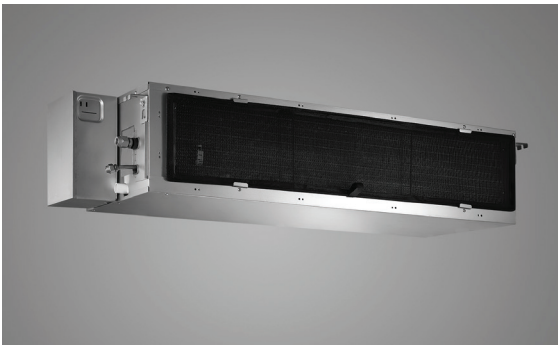
48K

Condensing Unit

- Compact size
- More sturdy and durable
- High efficiency compressor
- Low noise
- 4-minute protection
- Valve protection
- Easier installation
- Easier maintenance
- Universal design



- New upside-down E-Box more universal and reliable(for inverter type)



Features and benefits



Multi-Speed Fan

Multi-speed fan helps satisfy various airflow requirements.



Washable Filter

Washable filter allows for convenient service and maintenance.



4-Minute Protection

A 4-minute delay before the compressor will restart helps avoid compressor damage and work time.



Auto Restart

Unit is automatically returned to previous operating conditions after a power outage, for simplified operation.



24-Hour Timer

Allows programmed start times up to 24 hours in advance for flexible and more convenient operation.



Self Diagnosis

Clearly displayed failure codes allow for quicker troubleshooting and easier maintenance.



Inner Groove Copper Tube


Inner groove copper tubing allows more refrigerant to pass through, improving heat exchange by 30 to 50% when compared to traditional copper tubing, and lowering power consumption while keeping output capacity at the same level.



AirX Duct Technical Specifications				
Model			AEXCCI-24IHCCC / AEXCCO-24IHCCC	AEXCCI-48IHCCC / AEXCCO-48IHCCC
Type			Heat Pump , Inverter	Heat Pump , Inverter
Power Supply (Voltage/Phase/Frequency)			220-240V/1Ph/50Hz	380-415/3Ph/50Hz
Cooling	Capacity	Btu/h	24,000	48,000
	Input	W	2,240	3,920
	EER	KW/KW	3.14	3.59
Heating	Capacity	Btu/h	26,500	51,240
	Input	W	2,350	4,150
	EER	KW/KW	3	4
Indoor Air Flow Rated(Max)			m3/h	2,000
Noise Level	Indoor	dB(A) max	40	52
	Outdoor	dB(A) max	56	60
Indoor Unit	Dimensions(WXHxD)	mm	900x270x720	1386x350x800
	Net Weight	kg	32	50
Outdoor Unit	Dimensions(WXHxD)	mm	860x670x310	950x1386x340
	Net Weight	kg	51	101
Refrigerant			(Type/kg)	R410A/1.7
Refrigerant Piping	Liquid Pipe	Diameter - Inch	3/8	3/8
	Gas Pipe	Diameter - Inch	5/8	3/4



**GREEN SERVICES
TRADING (Pvt) Ltd**

 **111 000 229**

 **House 06, G-3 Block, Canal Road, Johar Town, Lahore**

 **support@greenservices.pk**